

المرينا MARINA | O
HOTEL & RESIDENCE





101 FLOORS
OF PREMIUM LIVING

DAZZLING DUBAI

THE STAR CITY OF THE MIDDLE EAST

One of the most cosmopolitan cities in the world

To some it is the ultimate luxury resort city in the world. While others tend to draw a parallel with the Big Apple - New York, considering both come across as cities of ambitions, lands of opportunities that promise untold riches, cases of fulfilling aspirations and lifestyles.

Dubai is all this and more. Acknowledged as the gateway between the east and the west, it is a leading regional tourist and commercial hub with excellent global connectivity, state-of-the-art infrastructure exceptional education and healthcare facilities.

Dubai's emergence as the fastest growing city in the region is very evident in its evolving landscape.

Some of the tallest skyscrapers, including the world's tallest building adorn Dubai's skyline, reminding one very much of the Manhattan of New York. The city is also a shopper's paradise, boasting of the world's biggest shopping mall amongst a plethora of other world-class malls.

From the tranquility of the desert to the lively bustle of a world-leading metropolis, Dubai offers a kaleidoscope of attractions to its residents, visitors and investors alike, including a world-class lifestyle, pulsating nightlife and a safe, tax-free haven for investments. Home to over 2 million people of more than 200 nationalities, it is undoubtedly one of the most cosmopolitan cities in the world.



101 floors, the second tallest tower in Dubai

TALLEST IN DUBAI MARINA

THE BEST OF DUBAI

A high-octane lifestyle at the most happening address

For the stylish jet setters, there is one place in Dubai that will offer the most dramatic and magnificent everyday life.

Marina 101

Inspired by the distinctive architectural style of buildings in Manhattan, New York, Marina 101 is an iconic structure being developed by Sheffield Holdings Limited, with an investment of over AED 1.2 billion. This unique project comprises of 101 floors, the tallest tower in Dubai Marina, rising to 425 m (1,394 ft) and covering an area of approximately 1.65 million square feet.

At nearly half a kilometer up in the sky, overlooking the rest of Dubai's fast evolving skyline, Marina 101 promises incomparable views coupled with a high-octane lifestyle at the most happening address in one of the most vibrant cities of the world.

32 floors of the building will host the elite luxury hotel, while another 42 floors will feature exclusive hotel apartments complemented by luxurious residences from the 80th floor to the top. The highlight of the building is the 101st floor that features a fancy night-club lounge. Furthermore, 6 restaurants and lounges will be located on different levels of the tower.



Nightlife at Marina 101, an unforgettable reality

THRILLING NIGHT LIFE

EXCITING FROM THE MOMENT YOU STEP IN

Presenting the best of the world

32 floors of world-class hospitality, adorned with opulent furnishings and supported by state-of-the-art technology, each room a tribute to the connoisseurs of modern lifestyle, adding a new dimension to the exclusive waterfront living for holiday and business travelers.

Nightlife at Marina 101 is truly an unforgettable reality. As the sun goes down, trendy bars open up.

The night begins with romantic dining at some of the finest international restaurants, followed by a party in typical New York City fashion with music and dancing.



Rich finishes throughout every apartment

LUXURY EVERYDAY

WHERE AFFLUENCE MEETS ASPIRATIONS

A signature living experience adorned by a tailored concierge service

Marina 101 redefines affluent living with exquisite penthouses and spacious 3-bedroom residences, each offering majestic views across the city.

A wealth of well appointed interiors and luxuries such as Spanish marbles, German sanitaryware and Japanese elevators, not to mention a plethora of world-class lifestyle amenities, all combined to ensure that the homes are tailored to set a global standard in premium living.

Rich finishes throughout every apartment add to the value of your investment. Ornate chandeliers, glittering spotlights, marble and parquet flooring all highlight the elegance of your lifestyle.

Complemented by a highly advanced modular kitchen, fire protected front doors, double glazed glass windows and plush bathrooms equipped with sprawling Jacuzzi bathtub and Turkish baths.



OPULENCE IN EVERY ASPECT

LIVING AT THE TOP

Stunning aerial views of the city

Imagine breathing in the early morning fresh air with stunning sunlight filtering into your room, over a hot cup of coffee, or soaking in stunning aerial views of the Palm, Burj Al Arab, Dubai Marina and the golf course from your high rise residence.

Envision sipping in a sprawling Jacuzzi bathtub on a lazy weekend afternoon sipping your favorite vintage, or just stepping a few floors up for a leisurely session at the gym or rewarding yourself with a massage at one of the most lavish spas in the city.

Experience walking into some of the finest shopping malls of the world conveniently located just a few minutes away.

Imagine ending your day with fine dining restaurants or chilling at the majestic 101 floor right on top of Dubai complemented by the most happening lounge and multi-cuisine restaurant.

There can't be a better setting for a social life as floor 101 of Marina 101 promises.

You'll find your own little slice of heaven atop the city while spending an evening enjoying warm breeze, spectacular views and fancy cocktails.

Life at Marina 101 is truly an invigorating experience.



Rejuvenating treatments a few floors away

HOME OF WELLNESS

BEST-IN-CLASS RECREATIONAL & FITNESS CENTERS

One of the most lavish spas of the city

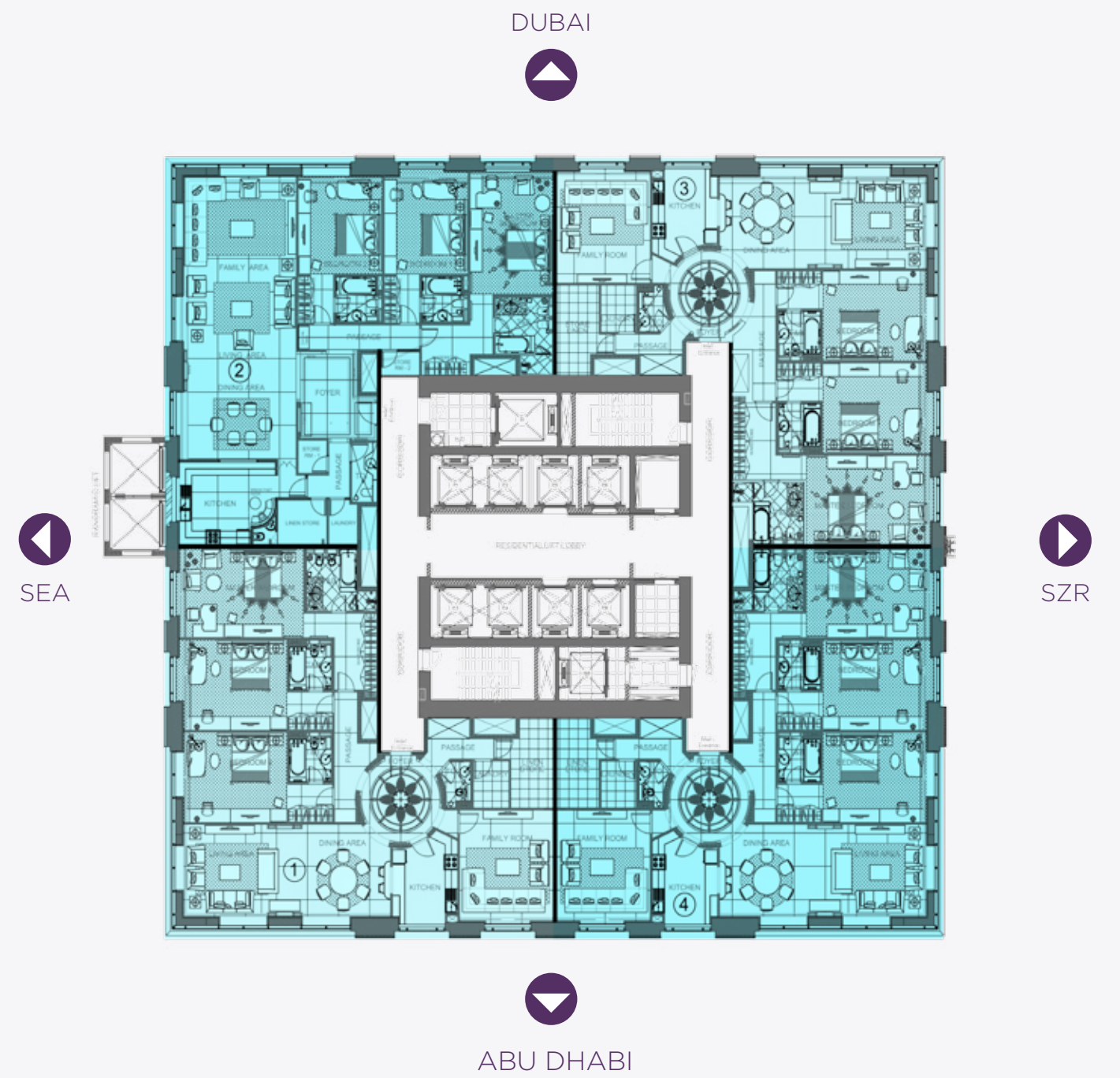
One of the outstanding features of the building is the presence of three recreational and fitness centers under one roof, which occupy six floors and includes swimming pools, gymnasiums, spas and saunas.

The gymnasium features top of the line cardio and exercise equipment along with a variety of classes. Therapies in the spa will be individually tailored to soothe pain and stress, revive and rejuvenate, relax muscles and restore inner balance.



Spacious from every angle

3-BEDROOM FLOOR PLAN



3-BEDROOM APARTMENTS FLOORS 80 - 94

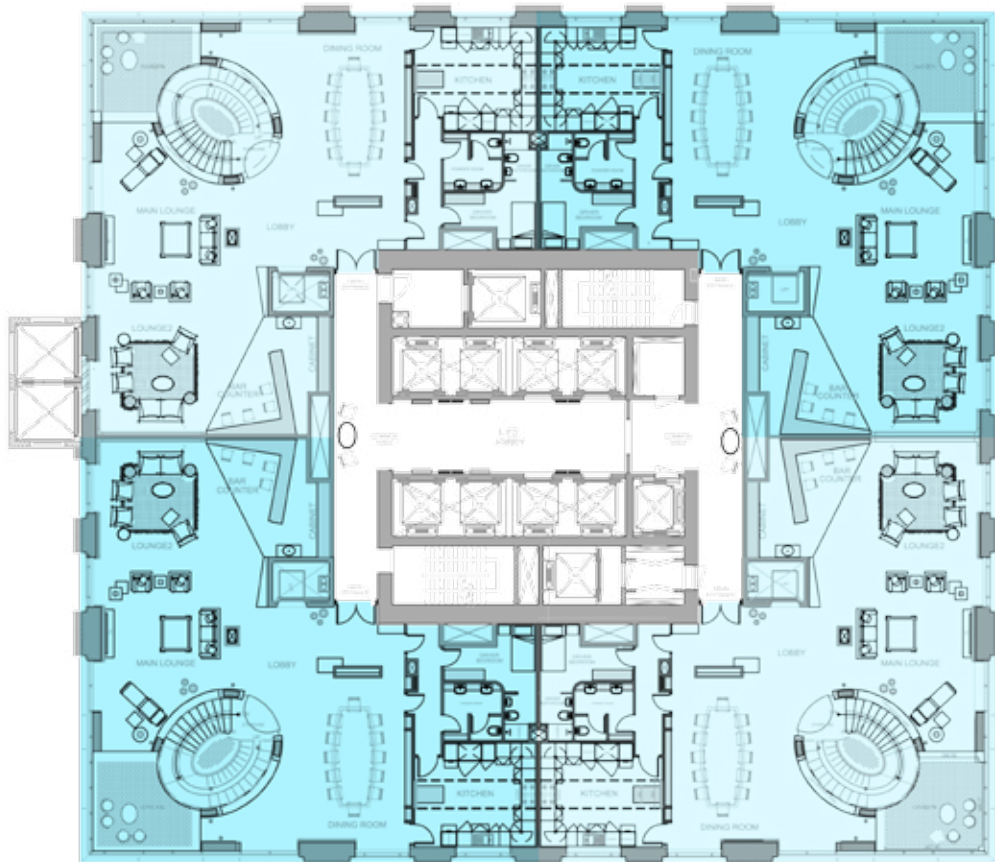
UNIT	AREA
1,2,3 and 4	3,653 sq.ft.

PENTHOUSE FLOOR PLANS

DUBAI

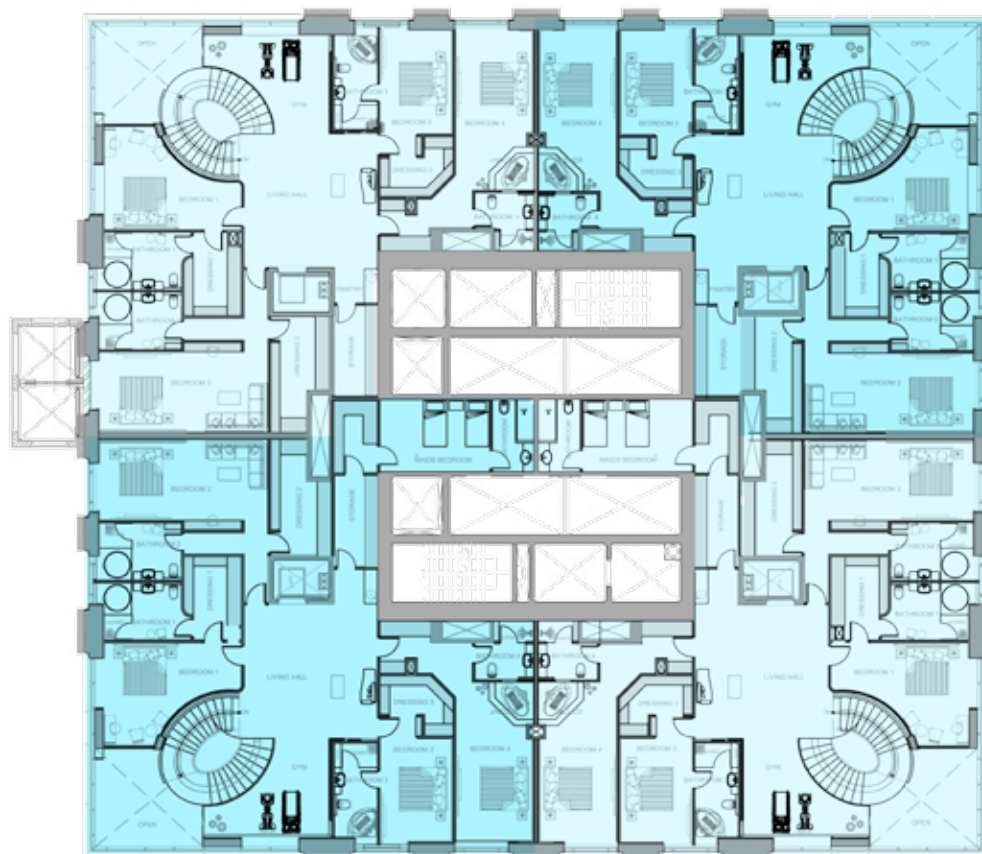


LOWER LEVEL 97



SEA

UPPER LEVEL 98



ABU DHABI

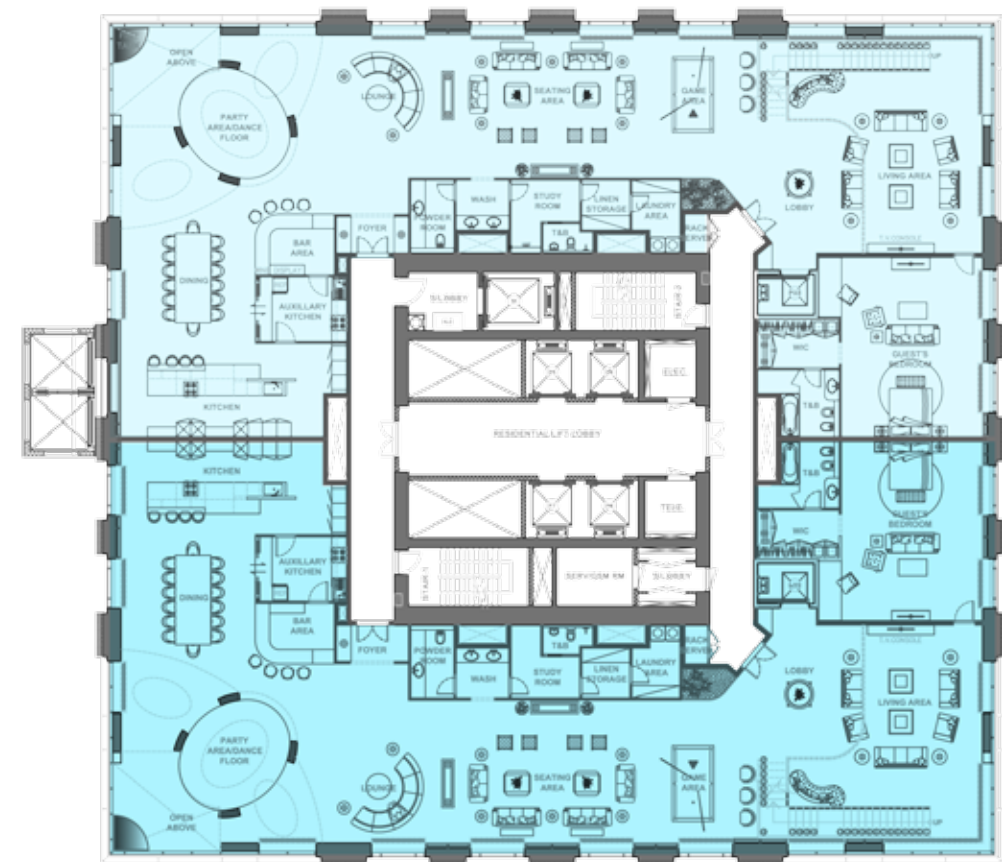
DUPLEX PENTHOUSES FLOORS 97 - 98

UNIT	AREA
1,2,3 and 4	7,306 sq.ft.

DUBAI



LOWER LEVEL 99

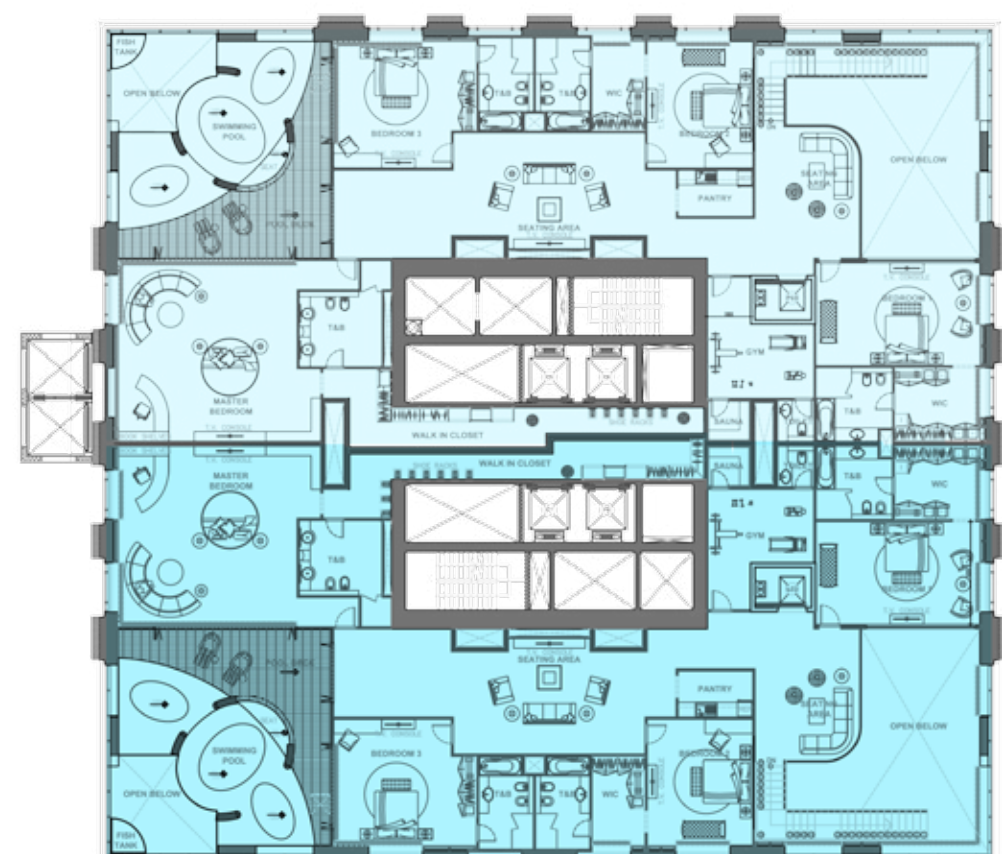


SEA



SZR

UPPER LEVEL 100



ABU DHABI

DUPLEX PENTHOUSES FLOORS 99 - 100

UNIT	AREA
1 and 2	14,612 sq.ft.

PERFECTION IS A WAY OF LIFE

FINISHING TOUCHES

Stylish spaces with high-end finishes

- On the top of the concrete structure there is a Tower Crown forty five meters high made up of steel structure and cladding with powder-coated aluminum composite panels
- The entire façade has a combination of aluminum composite panels or glazing
- A set of two panoramic elevators operate from ground floor to the specialty lounge, bar and restaurant at level 101
- The internal finishes comply with the specifications and requirements of a 5-star hotel and deluxe hotel apartments
- All doors in the lobbies are fire-resistant and have a lacquer-finish, meeting the international ratings
- All bedrooms have full height wooden cupboards with veneer finish and lacquer finish
- The kitchens are equipped with ultimate luxury appliances
- Cherry parquet for bedroom flooring
- Spanish marble for the foyer
- Residence bathrooms are outfitted with Jacuzzi bathtubs
- Luminaries and transformers from Philips, Osram or equivalent
- German-made sanitaryware
- German-made mixers and accessories
- Japanese-made air conditioning systems
- 29 Mitsubishi elevators throughout the building





Location map

101 FLOORS
OF PREMIUM LIVING

For more details



SHEFFIELD HOLDINGS LIMITED - MARINA 101

Emaar Square, Building 4, Office 203
P.O Box 161652, Dubai, United Arab Emirates
+971 4 380 6750
sales@sheffieldholdings.com